

This article was downloaded by:

On: 25 January 2011

Access details: *Access Details: Free Access*

Publisher *Taylor & Francis*

Informa Ltd Registered in England and Wales Registered Number: 1072954 Registered office: Mortimer House, 37-41 Mortimer Street, London W1T 3JH, UK



Journal of Macromolecular Science, Part A

Publication details, including instructions for authors and subscription information:

<http://www.informaworld.com/smpp/title~content=t713597274>

ERRATA

To cite this Article (1972) 'ERRATA', Journal of Macromolecular Science, Part A, 6: 3, 657 — 659

To link to this Article: DOI: 10.1080/10601327208056864

URL: <http://dx.doi.org/10.1080/10601327208056864>

PLEASE SCROLL DOWN FOR ARTICLE

Full terms and conditions of use: <http://www.informaworld.com/terms-and-conditions-of-access.pdf>

This article may be used for research, teaching and private study purposes. Any substantial or systematic reproduction, re-distribution, re-selling, loan or sub-licensing, systematic supply or distribution in any form to anyone is expressly forbidden.

The publisher does not give any warranty express or implied or make any representation that the contents will be complete or accurate or up to date. The accuracy of any instructions, formulae and drug doses should be independently verified with primary sources. The publisher shall not be liable for any loss, actions, claims, proceedings, demand or costs or damages whatsoever or howsoever caused arising directly or indirectly in connection with or arising out of the use of this material.

ERRATA

JOURNAL OF MACROMOLECULAR SCIENCE—CHEMISTRY,
Volume A5(5), 1971.

Page 991, first line below Eq. (7) should read "where $\Delta C_L \dots$ "

The line above Eq. (10) should read "for rubber elasticity [14, 16],"
i.e., the word "to" should be deleted.

Page 993, Eq. (14) should read:

$$\left(\frac{\partial^2 L}{\partial T^2}\right)_{p,f} = -\left(\frac{\partial^2 f}{\partial T^2}\right)_{p,L} \left(\frac{\partial f}{\partial L}\right)_{p,T} \quad (14)$$

Equation (15) should read:

$$\left(\frac{\partial \beta_L}{\partial T}\right)_{p,f} = -\left(\frac{\partial \ln f}{\partial T}\right)_{p,L} \left(\frac{\lambda^3 - 1}{\lambda^3 + 2}\right) \quad (15)$$

E. H. Cirlin
H. M. Gebhard
M. Shen*

Science Center
North American Rockwell Corp.
Thousand Oaks, California 91360

*Present address: Department of Chemical Engineering,
University of California, Berkeley, California 94720.

Accepted by editor February 3, 1972
Received for publication February 7, 1972

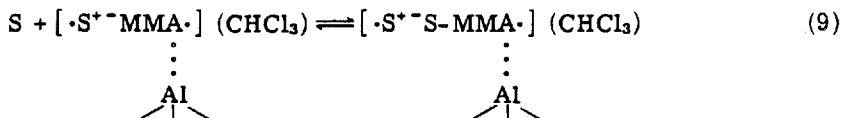
JOURNAL OF MACROMOLECULAR SCIENCE—CHEMISTRY,
Volume A5(7), 1971, p. 1244.

Equation (7) should read



Paragraph 3, lines 2-3, change "a mixture of 1:1 and 1:2 copolymers" to read "a mixture of 1:1 and 2:1 copolymers."

Equation (9) should read



Birendra K. Patnaik
Norman G. Gaylord

Gaylord Research Institute Inc.
Newark, New Jersey 07104

Accepted by editor
Received for publication February 7, 1972

JOURNAL OF MACROMOLECULAR SCIENCE—CHEMISTRY,
Volume A5(4), 1971, p. 662.

In line 15 change "intrachain" to "interchain."

B. M. E. van der Hoff

Department of Chemical Engineering
University of Waterloo
Waterloo, Ontario, Canada

Received for publication February 7, 1972